

CY SERIES



2D Measurement



CY SERIES

Intelligent industrial endoscope

CY Intelligent industrial endoscope is equipped with 5 inch industrial grade touch LCD screen, double operation of the touch button; mega pixel to restore real image color; with achieve comparative measurement method, automatic identification of defects, WiFi remote Unicom, double view integrated screen display, intelligent editing pictures and other functions. Customized; suitable for aircraft engine turbine blades, burning chamber cracks, finding exclusion and exclusion of excess objects inside the body structure framework, various types of oil pipe welding, etc. Detection of components, nozzle components and other parts;

Point to Line ●

Area measurement function

Real time network connection ●

Support WIFI 5G function (Optional)

2 USB ports ●

VGA video output point to point

5.7 inch ●

Industrial grade touch LCD screen

● Adopt adaptive noise reduction technology

To capture highdefinition still pictures

● Support External mouse

Keyboard input

● Built in 64G SSD

To prevent data loss



Product technical parameters

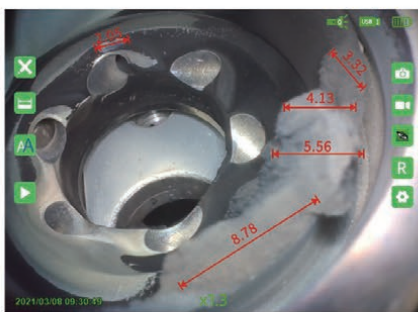
Host	
Display	5.7" Industrial grade touch LCD screen
Audio	3.5mm earphone/microphone jack
Dimension	360*160*60mm
Output	VGA video output(Dual screen synchronous display), dual USB output port
Storage	64GB SSD and can be expandable up to 512GB
Power	Special rechargeable lithium battery pack, online charging, Working time \geq 4 hours
IP Grade	Host IP54, Probe IP67
Operating temperature of the host system	-20°C~70°C, Low temperature without preheating (customized-40°C~85°C)
Storage Temperature	-20°C-80°C
Relative Humidity	Max 95%, No condensation

Camera Probe	
Probe Diameter	0.95mm~8mm
Pixel	1.0MP/450,000 pixels/160,000 pixels
Length	1~7m(other customized)
Articulation	360° all way articulation
Max swing head Angle	\geq 180°
DOF	3~40mm/5~100mm/10~200mm/50mm~ infinity
FOV	90°~140°
View direction	Front, side, dual view(Dual screen synchronous display) Front and side switched
Illumination	Rear high power LED fiber optical transmission
Brightness of Illumination	Up to 100000+lux
Operating Temperature	-20°C~80°C

System / software	
Image / video format	Image:JPEG(JPG), Video:MP4
Image control	With freeze, zoom, photo, flip, video playback, analog ruler functions
System language	Chinese (traditional), English and other seven language functions



01 /Comparative Measurement



Measurement by comparison method: the unknown quantity is detected by a known standard quantity for measurement purposes, and the value of the 0.01mm margin is marked.

02 /Automatic Identification of Defects (Optional)



Common endoscope visual detection mainly relies on manual discrimination of defects, which is inefficient and leads to misjudgment or side inspection. Customized automatic detection and defect identification system can improve detection efficiency.

03 /Remote Connectivity



Wifi can be used to realize remote connectivity, and the video scenes being tested can be shared with off-site experts for communication and diagnosis, so as to improve detection efficiency and realize multidirectional collaborative remote service functions.

04 /Multiple pipeline options



Lens protector

Side view lens



A variety of lenses and pipelines meet different needs. Optical lenses can be adapted to direct and side view replaceable lenses to meet the needs of actual detection applications.



05 /Smart Editing Pictures



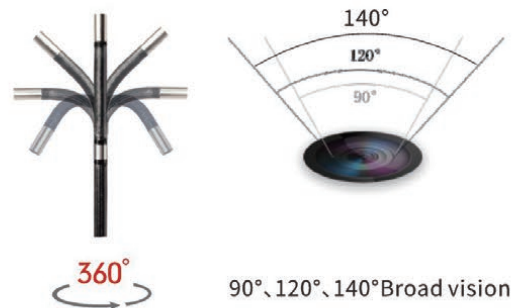
The watermark can be named in Chinese and English, which is convenient to trace the defect brush marks and facilitate the classification of the later detection values.

06 /The Same Screen Display

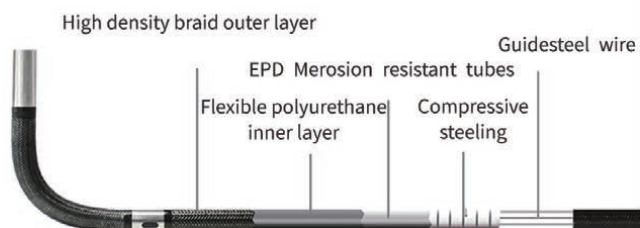


Two million HD cameras, direct and side view, real-time display of dualperspective images on the same screen, completely solve the multidimensional simultaneous detection of pain points, improve detection efficiency.

07 /Free Rotation



90°、120°、140°Broad vision



Wear-resistant fourlayer tungsten wire weave, 360° omnidirectional swing

CY6 Series Model

Model	Tip Dia.	Length	Articulation	Camera Pixels	Bend Angle	Side View for Option
CY6-1200	Ø1.2mm	1M	Non	40000		Non
CY6-1201	Ø1.2mm	2M	Non	40000		
CY6-18002	Ø1.8mm	3M	2 way	160000	180°	
CY6-18012	Ø1.8mm	1M	2 way	160000	180°	
CY6-24012	Ø2.4mm	2M	2 way	160000	180°	
CY6-24022	Ø2.4mm	3M	2 way	160000	180°	
CY6-28014	Ø2.8mm	1M	360°	160000	180°	Yes
CY6-28024	Ø2.8mm	2M	360°	160000	180°	
CY6-28034	Ø2.8mm	3M	360°	160000	180°	
CY6-39014	Ø3.9mm	1M	360°	1mega	180°	
CY6-39024	Ø3.9mm	2M	360°	1mega	180°	
CY6-39034	Ø3.9mm	3M	360°	1mega	180°	
CY6-60014	Ø6.0mm	1M	360°	1mega	180°	Dual View Option
CY6-60024	Ø6.0mm	2M	360°	1mega	180°	
CY6-60034	Ø6.0mm	3M	360°	1mega	180°	