



CK Series VIDEOSCOPE

MULTIFUNCTIONAL INSERT TUBE

5.0 inch industrial LCD screen

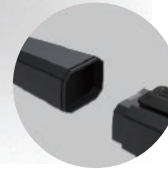
360° Omnidirectional articulation function



LENS COVER

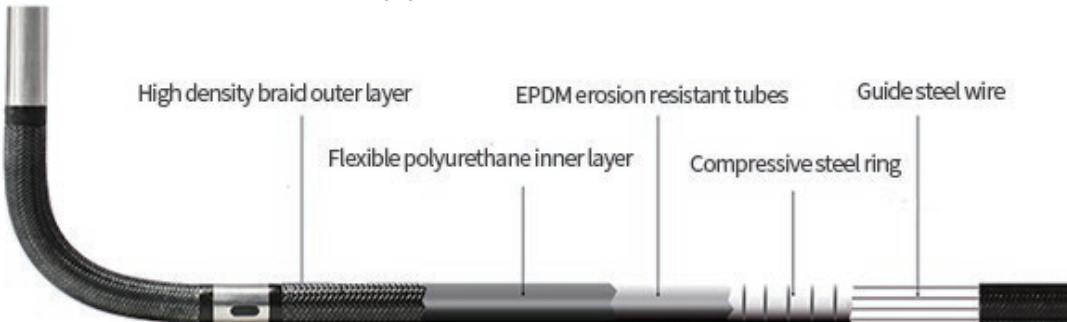


STRAIGHT/
SIDE VIEW LENS



4 hours long endurance, combined battery
The battery can be used for a long time, and the USB power supply can be directly charged

Specially treated four layer tungsten wire braided wear-resistant pipe



Depth of field
90°/120°/140°

1.8-6mm Various probe diameters are available

A host can be equipped with different diameters of probes

-  **1.8mm Forward View**
-  **2.4mm Forward View**
-  **2.8mm Forward View**
-  **3.9mm Forward&Side Dual View**
-  **6.0mm Forward View**
-  **6.0mm side View**
-  **6.0mm Forward&Side Dual View**



High Image Quality & Features



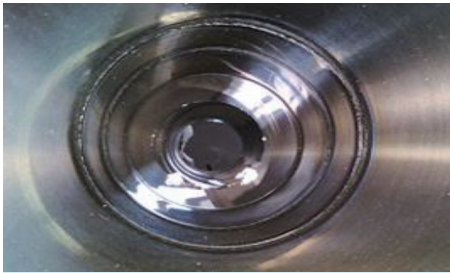
HD 1,000,000 PIXEL



High Brightness LED



Long Depth of Field



Highly True Colors

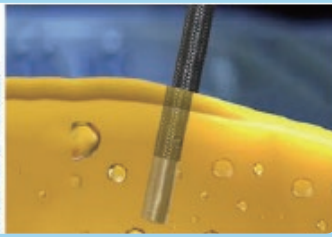


Overexposure Restrain

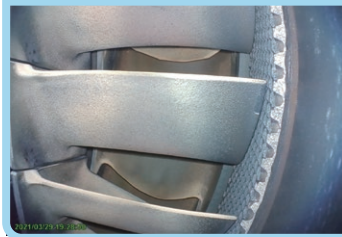


Applicable to all kinds of equipment

IP67 Water Proof Design



1 Mega Pixels camera



Scenario application



Industrial testing



Aerospace



Power detection



Rail transit

CK SERIES HAND-HELD HD INDUSTRIAL BOERSCOPE

CK series is a new one million high definition industrial video boerscope .

The images are delicate and clear, and the probe of different specifications can be quickly replaced. The inserted pipes are waterproof, oil resistant and wear-resistant. They have powerful software functions and can be applied to various projects.

They are mainly used in automobile manufacturing, aerospace, precision casting, railway ships, pressure vessels, electric power, petrochemical and pipelines welding, logistics, national defense, military police, and other internal visual inspection scenes, is a video endoscope that can meet your various environmental needs.



6" HD Display is Available for Option (CK6 Series)



6" HD Display



Detachable design.
All Probes are Interchangeable for both
CK5 5" Display & CK6 6" Display.



Sunshade Display. Anti Reflection.



Support 1pc to 4pcs 18650 type batteries.
Working Time >8 Hours

CK5 vs CK6 Display Comparison		
Model	CK5	CK6
Display	5"	6"
Pixel	1024 x 768	1920 x 1080
Sunshade Display	No	Yes
Battery	Fix	Support 1pc to 4pcs 18650 type battery
Working Time	≥ 4 Hours	≥ 8 Hours
Probe	Same Probes, Interchangeable	

Standard accessories



tripod



Rugged
tool box



USB Cable



Charger



TF card



Card reader



Battery
(for optional)

CK5 Series (Interchangeable Display & Probe)

Model	Display	Tip Dia.	Length	Articulation	Camera Res.	LED Light
CK5-18002	5"	Ø1.8mm	0.5M	2Way	160000 Pixels	8000Lx
CK5-18012	5"	Ø1.8mm	1M	2Way	160000 Pixels	8000Lx
CK5-24012	5"	Ø2.4mm	1M	2Way	160000 Pixels	15000Lx
CK5-24022	5"	Ø2.4mm	2M	2Way	160000 Pixels	15000Lx
CK5-28014	5"	Ø2.8mm	1M	360°(4Way)	160000 Pixels	15000Lx
CK5-28024	5"	Ø2.8mm	2M	360°(4Way)	160000 Pixels	15000Lx
CK5-28034	5"	Ø2.8mm	3M	360°(4Way)	160000 Pixels	15000Lx
CK5-39014	5"	Ø3.9mm	1M	360°(4Way)	1MP	8000Lx
CK5-39024	5"	Ø3.9mm	2M	360°(4Way)	1MP	8000Lx
CK5-39034	5"	Ø3.9mm	3M	360°(4Way)	1MP	8000Lx
CK5-39044	5"	Ø3.9mm	4M	360°(4Way)	1MP	8000Lx
CK5-39054	5"	Ø3.9mm	5M	360°(4Way)	1MP	8000Lx
CK5-60014	5"	Ø6.0mm	1M	360°(4Way)	1MP	14000Lx
CK5-60024	5"	Ø6.0mm	2M	360°(4Way)	1MP	14000Lx
CK5-60034	5"	Ø6.0mm	3M	360°(4Way)	1MP	14000Lx
CK5-60044	5"	Ø6.0mm	4M	360°(4Way)	1MP	14000Lx
CK5-60054	5"	Ø6.0mm	5M	360°(4Way)	1MP	14000Lx
CK5-60064	5"	Ø6.0mm	6M	360°(4Way)	1MP	14000Lx
CK5-60074	5"	Ø6.0mm	7M	360°(4Way)	1MP	14000Lx
CK5-60084	5"	Ø6.0mm	8M	360°(4Way)	1MP	14000Lx

CK6 Series (Interchangeable Display & Probe)

Model	Display	Tip Dia.	Length	Articulation	Camera Res.	LED Light
CK6-18002	6"	Ø1.8mm	0.5M	2Way	160000 Pixels	8000Lx
CK6-18012	6"	Ø1.8mm	1M	2Way	160000 Pixels	8000Lx
CK6-24012	6"	Ø2.4mm	1M	2Way	160000 Pixels	15000Lx
CK6-24022	6"	Ø2.4mm	2M	2Way	160000 Pixels	15000Lx
CK6-28014	6"	Ø2.8mm	1M	360°(4Way)	160000 Pixels	15000Lx
CK6-28024	6"	Ø2.8mm	2M	360°(4Way)	160000 Pixels	15000Lx
CK6-28034	6"	Ø2.8mm	3M	360°(4Way)	160000 Pixels	15000Lx
CK6-39014	6"	Ø3.9mm	1M	360°(4Way)	1MP	8000Lx
CK6-39024	6"	Ø3.9mm	2M	360°(4Way)	1MP	8000Lx
CK6-39034	6"	Ø3.9mm	3M	360°(4Way)	1MP	8000Lx
CK6-39044	6"	Ø3.9mm	4M	360°(4Way)	1MP	8000Lx
CK6-39054	6"	Ø3.9mm	5M	360°(4Way)	1MP	8000Lx
CK6-60014	6"	Ø6.0mm	1M	360°(4Way)	1MP	14000Lx
CK6-60024	6"	Ø6.0mm	2M	360°(4Way)	1MP	14000Lx
CK6-60034	6"	Ø6.0mm	3M	360°(4Way)	1MP	14000Lx
CK6-60044	6"	Ø6.0mm	4M	360°(4Way)	1MP	14000Lx
CK6-60054	6"	Ø6.0mm	5M	360°(4Way)	1MP	14000Lx
CK6-60064	6"	Ø6.0mm	6M	360°(4Way)	1MP	14000Lx
CK6-60074	6"	Ø6.0mm	7M	360°(4Way)	1MP	14000Lx
CK6-60084	6"	Ø6.0mm	8M	360°(4Way)	1MP	14000Lx

Parameters

Series	CK5-18	CK5-24	CK5-28	CK5-39	CK5-60
Probe Diameter(mm)	1.8mm	2.4mm	2.8mm	3.9mm	6.0mm
Viewing Direction	0° Front View				
Camera Pixels	160,000			1,000,000	
D.O.F.	3-70mm			8-150mm	12-200mm
F.O.V.	120° (90°/ 140° for option)				
Image Resolution	640*480 / 960*720 / 1280*720				
Video Resolution	640*480 / 960*720 / 1280*720				
Articulation	2-WAY Articulation	360° Joystick-control Articulation			
Light Source	Rear-mounted LED + Optic fiber			Front LED	
Illuminance	8000 Lx	15000 Lx		8000 Lx	14000 Lx
	1~8 levels adjustable light				
Probe Material	5 Layers of Tungsten-braided insert probe. Extreme resistance to impact and wearing.				
Probe Length	0.5m / 1m	1m / 2m	1m / 2m / 3m	1m / 2m / 3m 4m / 5m	1m / 2m / 3m 4m / 5m / 6m 7m / 8m
Bending Angle	160°	180° / 160°	180° /180° /120°	180° /180° /130° 120° / 100°	180° /180° / 130° 120° / 100° / 90° 90° / 80°
Waterproof	Probe / Camera: IP67				
Display	5" color IPS display. All sight viewing angle / 6" display for option				
Display Resolution	CK5: 1024*768 / CK6: 1920*1080 for option				
Language	Chinese (simplified), French, English, German, Spanish, Italian, Japanese				
Software Function	Freezing, zooming, photographing, flipping, video playback and analog ruler functions				
White Balance	Auto white balance/manual				
Structure	Handheld, integrated design				
Image / Video Format	JPG / MP4				
Data Port	HDMI video output				
Storage Temperature	-20°C~60°C				
Working Temperature	-10°C~50°C, low temperature without preheating				
Working Time	CK5: ≥4h / CK6: ≥8h for Option				
Battery Capacity	5V, 3400mAh (Detachable 18650 lithium-ion rechargeable type)				
Power Charge	DC5V, 1A				
Videoscope Weight & Size	CK5: 1Kg, Size: 350*155*59mm / CK6: 1Kg, Size: 375*175*78mm				
Compatibility	Interchangeable monitor and tube with different diameters				
Portable Case	ABS airtight shock-proof portable case, size: 46*40*19cm				
Carton Size	Export outer carton size: 479*387*155mm, GW:3.6kgs (Standard Series)				
Standard Accessory	tripod,Rugged tool box,USB Cable,Charger,TF card,Card reader,Battery(for option)				
Side View Camera	Non		Available for option (Light: Rear-mounted LED+Optic fiber)		
Dual-view Camera	Non				Available for option Light: Rear-mounted LED +Optic fiber)