

S1

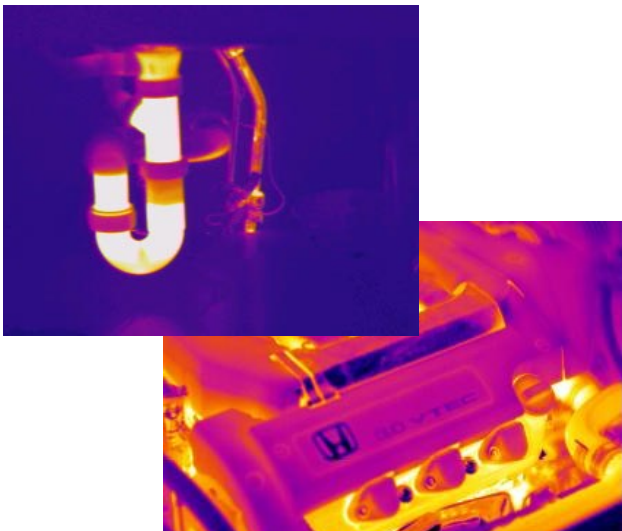
Smart Thermal Camera



The S1 is a Smart Thermal Camera from SATIR as a part of a new R&D development to make thermal imaging smart. It has an open android platform making it an easy to use device to suit all level of thermal imaging users.

It has an 256x192 IR detector which will deliver 49,152 pixels to the end-users screen. It also features a 48MP Digital Camera allowing the device to be multifunctional. It has great storage for videos and images with a memory capacity of 256GB.

It also has a good temperature range of $-20^{\circ}\text{C} \sim +550^{\circ}\text{C}$. With a measurement accuracy of $\pm 2^{\circ}\text{C}$ or $\pm 2\%$ of readings .



Key Features

- Smart Device Platform
- Open Android Platform
- Easy to Use Device
- 256x192 IR Detector
- 48MP Digital Camera
- Temperature Range of $-20^{\circ}\text{C} \sim +550^{\circ}\text{C}$

S1 Specifications

| | |
|---|--|
| Thermal Camera | |
| Detector Type | UFPA |
| Detector Resolution | 256x192 |
| Pixel Size | 12µm |
| Field of View | 55.6°x 42° |
| Measurement | |
| Temperature Range | -20°C ~ + 550°C |
| Accuracy | ±2°C or ± 2% of readings |
| Device System | |
| CPU | Qualcomm Snapdragon SM 4350 (Snapdragon 480 5G platform) |
| CPU frequency | Octa-core 2xGold(A76 based)+6x Silver(A55 based) |
| Operating system | Android 11 (support OTA system upgrade) |
| Memory capacity | 256GB eMMC + 8GB DDR4 |
| Screen display | 6.57-inch FHD+ (20:9 full screen), resolution 2520X1080 |
| Rear camera | 48 (64) MP main camera + 8MP depth of field. Support photo, video, panoramic photo, Auto focus, auto flash, HDK, continuous shooting, etc. |
| Battery capacity | 5000-5500mAh, Support fast charge QC4.0 (built-in battery) |
| Image Presentation | |
| Image mode | Infrared/Visible/Fusion |
| Flash | Support + flashlight |
| Image Storage | |
| SIM Type | Two nano cards |
| Add-in card type | Support Micro TF |
| Physical Characteristics (Camera Body) | |
| Encapsulation | IP68 |
| Shock/Vibration Resistance | 25G |
| Size | 81.5mm x170xmm (12+0.5) mm |
| Additional Features | |
| 5G data connection | 5G NR X51 modem (speed Depends on mmWAVE or Sub 6) |
| 4G data connection | DL:2.0Gbps CAT20/UL:316Mbps CTA13 |
| Fingerprint | Side fingerprint |
| GPS | Support GPS/Glonass/Galileo/Beidou+A-GPS |
| WLAN/Wifi | 802.11 b/g/n 2.4 GHz, 802.11. a , 5 GHz, 802.11.ac, 5 GHz |
| Bluetooth | Bluetooth 5.1 |
| Colour | Black |

Please be aware specifications can vary from time to time