



CT SERIES

360° VIDEOSCOPE



MULTIFUNCTIONAL INSERT TUBE



PROBE ARTICULATION

360 ° all-way articulation, damping type positioning design, precise probe locking technology, make the detection more accurate and efficient

Wear Resistant Tube

Insert tube with 5 layers tungsten alloy braided, Wear resistance: 20 times better than ordinary probe.



Bending

the maximum bending angle up to 190°.



Wifi (option)

It can be available for remote wireless synchronization display on terminals of mobile phone/tablet without monitor.



Illumination

Lx With super bright ceramic LED, the illuminance can reach to 50,000 Lx.



Battery Life

Original dual battery design, 8 hours working time, real-time battery display. *18650 type.



OPTIONS AND ACCESSORIES

- Multi-functional magnetic adsorption rotary folding stand
- Intelligent storage box with multifunctional feeding device
- Super practical probe accessories to meet a variety of inspection requirements.





STRONG HARDWARE

CT5 series videoscope is module designed. Configured with 5.1 inches HD display, suitable for different inspection requirements. The monitor and probe can be separated by one button. It is compatible with different diameter tubes like: 2.0mm/2.2mm/2.8mm.



High temperature alarm function: Orange alarm when the temperature is above 65 °C; Red alarm and shutdown when the temperature is more than 80 °C.



HDMI



The image can be outputted to HD display by HDMI.



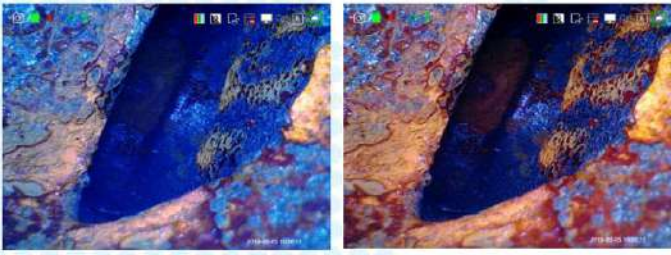
Original dual battery design, 8 hours working time; real-time battery indication



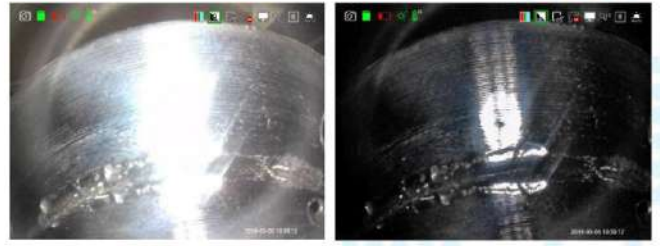
Display resolution: 1280*960, high light, wide color gamut, all sight viewing angle, ensure clear image, rich colors and good color reproduction.

INTELLIGENT SOFTWARE

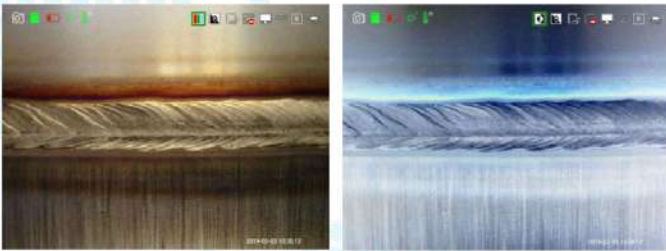
Strong intelligent image processing system: with the functions of mage rotation, white balance, exposure control, negative film and zoom in & out, comparative measurement, it can meet all kinds of complicated inspection



White Balance: Auto white balance with strong color reduction; manual-control white balance according to inspection needs.



Exposure Setting: exposure suppression--the polished object is also inspected clearly; exposure compensation--when checking large cavity, it can be more effective and clearer



Normal Mode: HD image effect Negative Film Mode: Enhance the ability to compare and analyze the internal defects of the inspected objects.



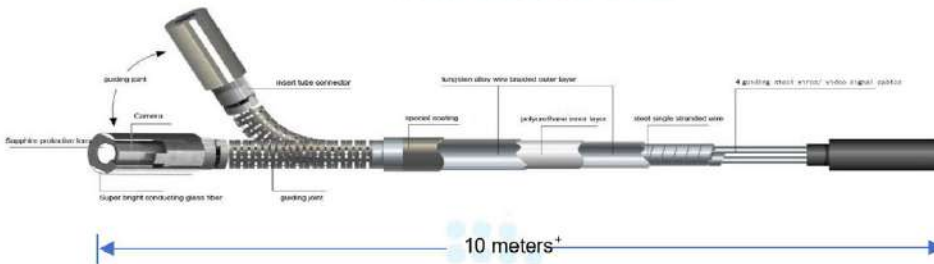
Support 8X zoom in/out

FLEXIBLE ARTICULATION CONTROL

360° joystick-control articulation, damping type positioning design, precise probe locking technology, make the detection more accurate and efficient. Independently developed technology of long-distance transmission ensures bending angle $\geq 100^\circ$, even the tube reaches 10 meters.

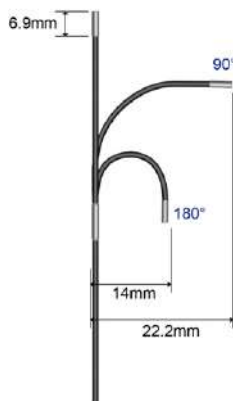


360° precision articulation

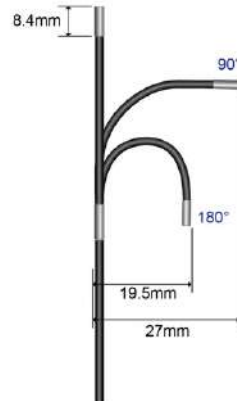


ARTICULATION RADIIUS

Camera Length



Ø2.2mm



Ø2.8mm



Ø3.9mm



Ø6mm

QUALITY ASSURANCE

All products are complied with RoHS, CE and ISO standard and passed testing for temperature, waterproof, drop, vibration and pressure. We devote ourselves to providing high-quality professional inspection instrument to every customer.



PARAMETERS

Φ2.2 Tube System	Probe Diameter(mm)	Φ2.2
	Camera Pixels	300,000
	Image Resolution	640×480
	Video Resolution	640×480
	DOF	5mm-50mm
	FOV	120°
	Viewing Direction	0° front view
	Light Source	Rear-mounted optic fiber
	Illuminance	Maximum: 20000+Lx 1~9 levels adjustable light
	Tube Length	1.0m/2m
	Protecting Device of Durability	42mm buffer protection device between tube and handle
	Articulation	2-way joystick-control articulation
	Bending Angle	Maximum:150°
	Probe Positioning	Damping positioning & articulation lock device
	Wi-Fi Transmission	Image transmission to Mobile phone, computer by Wi-Fi(optional)
Φ2.8 Tube System	Probe Diameter(mm)	Φ2.8
	Camera Pixels	300,000
	Image Resolution	640×480
	Video Resolution	640×480
	DOF	5mm-50mm
	FOV	120°
	Viewing Direction	0° front view/ 90° sideview
	Light Source	Rear-mounted optic fiber
	Illuminance	Maximum: 20000+Lx 1~9 levels adjustable light
	Tube Length	1.0m/1.5m/2m
	Protecting Device of Durability	42mm buffer protection device between tube and handle
	Articulation	360° joystick-control articulation
	Bending Angle	Maximum:150°
	Probe Positioning	Damping positioning & articulation lock device
	Wi-Fi Transmission	Image transmission to Mobile phone, computer by Wi-Fi(optional)

QUALITY ASSURANCE

All products are complied with RoHS, CE and ISO standard and passed testing for temperature, waterproof, drop, vibration and pressure. We devote ourselves to providing high-quality professional inspection instrument to every customer.



PARAMETERS

Φ3.9 Tube System	Probe Diameter(mm)	Φ3.9		
	Camera Pixels	1,000,000		
	Image Resolution	1280×720		
	Video Resolution	1280×720		
	DOF	10-100mm(3-15mm / 5-30mm for option)		
	FOV	120°		
	Viewing Direction	0° front view	90° side view	0° front view&90° side view
	Light Source	LED light/optic fiber		
	Illuminance	maximum: 20000+Lx 1~9 levels adjustable light		
	Tube Length	1.5m/3.0m(customized for other length)		
	Protecting Device of Durability	80mm buffer protection device between tube and handle		
	Articulation	360° joystick-control articulation		
	Bending Angle	maximum:190° (1.5M) /150° (2M) /120° (3M)		
	Probe Positioning	damping positioning & articulation lock device.		
	Wi-Fi Transmission	image transmission to Mobile phone, computer by Wi-Fi(optional)		
Φ6.0 Tube System	Probe Diameter(mm)	Φ6		
	Camera Pixels	1,000,000		
	Image Resolution	1280×720		
	Video Resolution	1280×720		
	DOF	10-100mm (3-25mm / 5-50mm / 20m-infinity for option)		
	FOV	120°		
	Viewing Direction	0° front view	90° side view	0° front view&90° side view
	Light Source	LED light/optic fiber		
	Illuminance	maximum: 50000+Lx 1~9 levels adjustable light		
	Tube Length	1.5m/3.0m/5.0m/6.0m (customized for other length)		
	Protecting Device of Durability	42mm buffer protection device between tube and handle		
	Articulation	360° joystick-control articulation		
	Bending Angle	maximun:190° (1.5M-3M) /120° (4M/5M) / 100°(6M-7M)/ 90° (8M-10M)		
	Probe Positioning	damping positioning & articulation lock device.		
	Wi-Fi Transmission	image transmission to Mobile phone, computer by Wi-Fi(optional)		

Φ8.0 Tube System	Probe Diameter(mm)	Φ8		
	Camera Pixels	1.5M-6M tube: 1,000,000 pixels	≥6M tube: 450,000	
	Image Resolution	1280*720	640*480	
	Video Resolution	1280*720	640*480	
	DOF	10-100mm (3-25mm / 5-50mm / 20m-infinity for option)		
	FOV	120°		
	Viewing Direction	0° front view	90° side view	0° front view&90° side view
	Light Source	LED light/optic fiber		
	Illuminance	maximum: 60000+Lx 1~9 levels adjustable light		
	Tube Length	1.5M-15M		
	Protecting Device of Durability	42mm buffer protection device between tube and handle		
	Articulation	1.5M-10M with 360° articulation; ≥10M, no articulation		
	Bending Angle	maximun:190°		
	Probe Positioning	damping positioning & articulation lock device.		
	Wi-Fi Transmission	image transmission to Mobile phone, computer by Wi-Fi(optional)		
Monitor System	Display	5.1" color IPS display, all sight viewing angle, sunshade design		
	Display Resolution	1280*960		
	Zoom In/Out	8X		
	Language	English / French / German / Spanish / Japanese / Traditional Chinese / Simplified Chinese / Russian / Korean/ Polish/ Italian		
	White Balance Suppression	5 levels adjustable		
	White Balance	auto white balance, automatically adjusts and eliminates speckles to achieve optimal images.		
	Image Effect	negative film/ black & white/standard		
	Temperature Indication	high temperature alarm (optional)		
	IP Level	probe/tube: IP67		
	Software Function	playback, image parameters adjust and rotate		
	Structure	hand-held integrated design		
	Image/Video Format	JPEG/MOV		
	Comparative Measurement	Use measuring probe and analog scale to compare and analyze the internal defect and size of the inspected object.		
	Data Port	HDMI video output, Micro USB port with water & dust proof device		
	Working Time	≥8h		
	Battery Capacity	3.7V, 3200mAh×2		
	Power Charge	DC5V, 1A		
	Weight	0.5Kg~1.5Kg		
Compatibility	interchangeable monitor and tube			
Accessories	Standard Configuration	instrument case:1pc; videoscope: 1 set; battery: 2pcs; card reader: 1pc; 16G. TF card: 1pc; charger: 1pc; USB cable: 1pc; user manual: 1 set		

Due to product updates, the final parameters should be based on specific models.

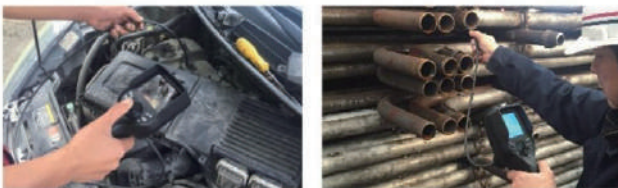
MODEL	DISPLAY	DIAMETER	LENGTH	ARTICULATION	RESOLUTION	Detachable Probe
CT5-22012	5.1"	Ø2.2mm	1M	2 Way	640*480	Yes. Ø2.2mm & Ø2.8mm are Interchangeable
CT5-22022	5.1"	Ø2.2mm	2M	2 Way	640*480	
CT5-28014	5.1"	Ø2.8mm	1M	360°(4 Way)	640*480	
CT5-28024	5.1"	Ø2.8mm	2M	360°(4 Way)	640*480	
CT5-39014	5.1"	Ø3.9mm	1.5M	360°(4 Way)	1280*720(HD)	Yes. Ø3.9mm & Ø6mm & Ø8mm are interchangeable
CT5-39024	5.1"	Ø3.9mm	2M	360°(4 Way)	1280*720(HD)	
CT5-39034	5.1"	Ø3.9mm	3M	360°(4 Way)	1280*720(HD)	
CT5-39054	5.1"	Ø3.9mm	5M	360°(4 Way)	1280*720(HD)	
CT5-60014	5.1"	Ø6.0mm	1.5M	360°(4 Way)	1280*720(HD)	
CT5-60024	5.1"	Ø6.0mm	2M	360°(4 Way)	1280*720(HD)	
CT5-60034	5.1"	Ø6.0mm	3M	360°(4 Way)	1280*720(HD)	
CT5-60054	5.1"	Ø6.0mm	5M	360°(4 Way)	1280*720(HD)	
CT5-60064	5.1"	Ø6.0mm	6M	360°(4 Way)	1280*720(HD)	
CT5-60074	5.1"	Ø6.0mm	7M	360°(4 Way)	1280*720(HD)	
CT5-60084	5.1"	Ø6.0mm	8M	360°(4 Way)	1280*720(HD)	
CT5-80104	5.1"	Ø8.0mm	10M	360°(4 Way)	1280*720(HD)	

PACKAGE



APPLICATION FIELD

T series videoscopes are widely used in many fields, such as automotive manufacturing, car aftermarket, police security checking, aviation and aerospace area, special inspection institute, pharmaceutical machinery, non-destructive testing, explosion-proof detection etc.



Dealer:



CT SERIES IR Videoscope



White/IR light source, one key toggle

Ultra-long viewing distance

Flexible options for tube diameter

Joystick control, 360° articulation

Dual-battery design, long working time

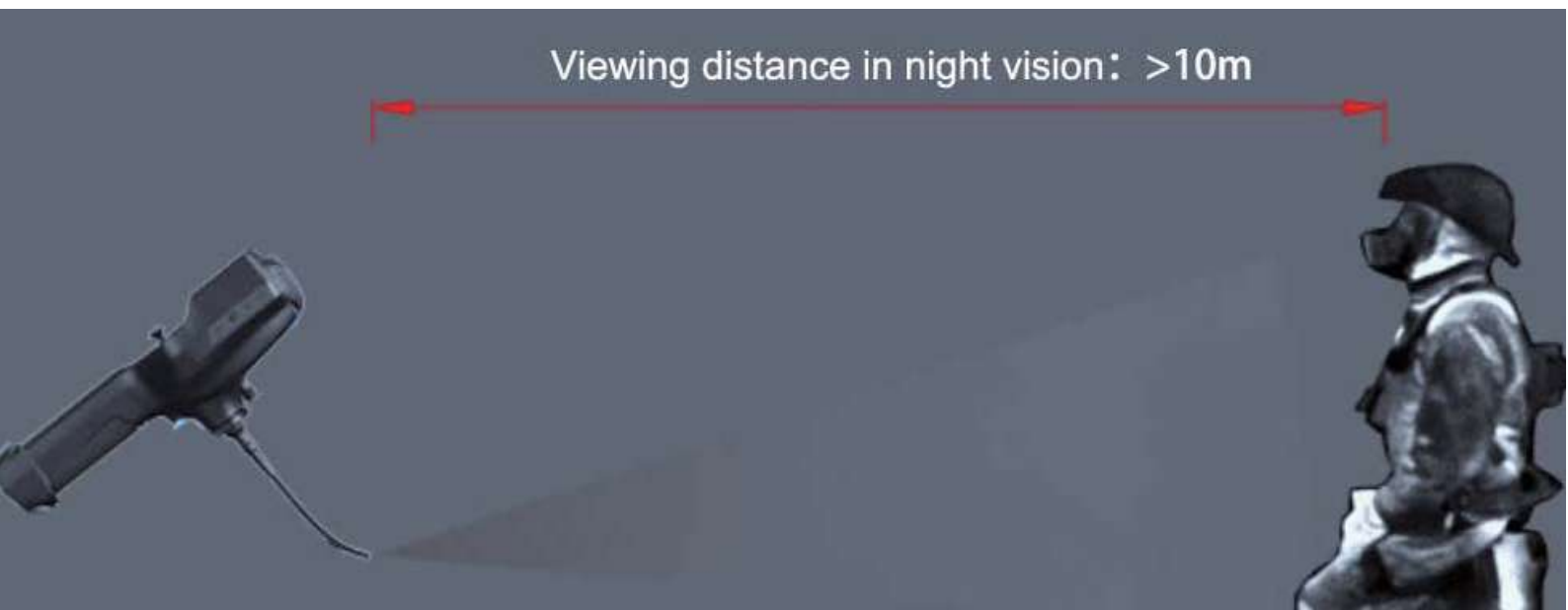


White/IR light source, one key toggle

Integrated design of IR & white dual light sources. Support one-key fast toggle.

Ultra long viewing distance

With the use of high-power rear-mounted IR light system, precision coupling technology as well as multi-mode lens group and nano coating technology, it realizes ultra-long viewing distance of more than 10 meters.



360° accurate positioning

360° all-way articulation, damping type positioning design, precise probe locking technology, makes the detection more accurate and efficient.



Maximum bending angle: 190°

Stretchable rod

It can be used for inspection on different objects, such as the bottom of a car, ceiling, etc.



Working time

Original design of dual battery mode, working time is more than 8h, real-time battery indication



Output/WiFi

Image transmission by WiFi or HDMI output, displayed with HD screen.



Parameters

Probe System	Probe Diameter (mm)	Φ6.0 (±2)
	Insertion Probe	5 layers tungsten-braided tube
	Camera Resolution	450,000 Pixel
	DOF (mm)	50-∞
	FOV	90°
	Light Source	IR only or IR & White LED dual light
	Illuminance	Maximum: 50000Lx, 10 level control
	Tube Length	1.0m/3.0m/5.0m (customized length)
	Compatibility	Replaceable different tube length
	Protecting Device of Durability	42mm buffer protection device between tube and handle
	Articulation	360° all-way
	Bending Angle	Maximum: 190°
	Probe Positioning	Damping positioning & articulation lock device
Monitor System	Compatibility	Replaceable monitor size
	Display	5.1" color IPS display
	Image/Video Resolution	640*480
	Display Resolution	1280
	Zoom in/out	8X
	Language	English/German/French/Spanish/Italian/Chinese/Korean...12 languages
	IP Level	Probe/tube: IP67
	Software Function	Playback, image parameters adjust and rotate
	Structure	Hand-held integrated design
	Image/video format	JPEG/MOV
	Memory	16GB TF card
	Scale	Compare and analyze the internal defect and size of the inspected object
	Data Port	HDMI, Micro USB, TF card, Earphone with water & dust proof
	Working Time	≥4h
	Battery Capacity	Rechargeable Li-Ion battery 3.7V, 3200mAhx2
	Power Charge	DC5V, 1A
	Weight	0.55~0.8Kg (with battery)
Operating Environment	Probe working Temperature	-20°C ~ +85°C
	System Working Temperature	-20°C ~ +50°C
	Relative Humidity	Maximum: 92%, Non-condensing

MODEL	DISPLAY	DIAMETER	LENGTH	ARTICULATION	RESOLUTION	LIGHT
CT5-60014IR	5.1"	Ø6.0mm	1M	360°(4 Way)	1280*720(HD)	IR
CT5-60024IR	5.1"	Ø6.0mm	2M	360°(4 Way)	1280*720(HD)	IR
CT5-60034IR	5.1"	Ø6.0mm	3M	360°(4 Way)	1280*720(HD)	IR
CT5-60014IRS	5.1"	Ø6.0mm	1M	360°(4 Way)	1280*720(HD)	IR & LED Swicth
CT5-60024IRS	5.1"	Ø6.0mm	2M	360°(4 Way)	1280*720(HD)	IR & LED Swicth
CT5-60034IRS	5.1"	Ø6.0mm	3M	360°(4 Way)	1280*720(HD)	IR & LED Swicth



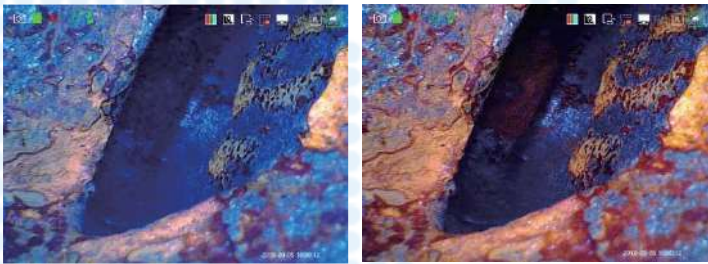
CT5-UV Series UV Borescope



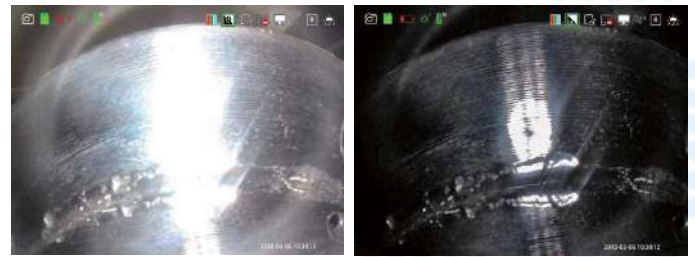
UV borescopes Application

UV borescopes have UV (ultra-violet) LED lights and white LED lights sources for special NDT applications. Usually, UV borescopes are used to inspect internal leaks and surface flaws with fluorescent dye liquid penetrant materials. Engineers and technicians in automotive manufacturing, aviation maintenance, industrial manufacturing, energy generation and transport will find a UV borescope very useful for special inspection.

Strong intelligent image processing system: with the functions of mage rotation, white balance, exposure control, negative film and zoom in & out, comparative measurement, it can meet all kinds of complicated inspection needs.



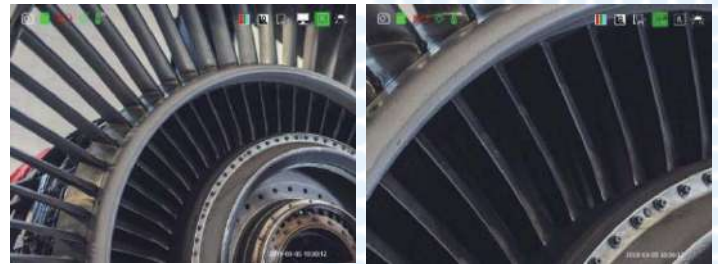
White Balance: Auto white balance with strong color reduction; manual-control white balance according to inspection needs.



Exposure Setting: exposure suppression--the polished object is also inspected clearly; exposure compensation--when checking large cavity, it can be more effective and clearer

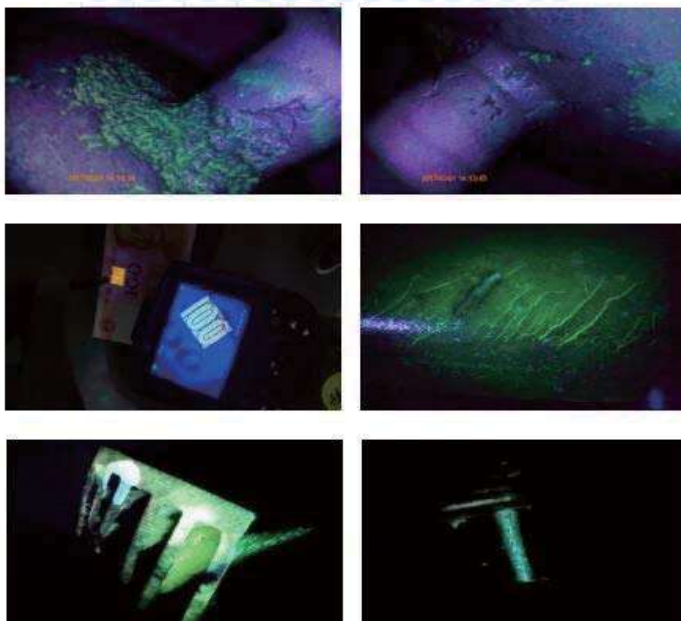


Normal Mode: HD image effect Negative Film Mode: Enhance the ability to compare and analyze the internal defects of the inspected objects.



Support 8X zoom in/out

UV Inspection on Site



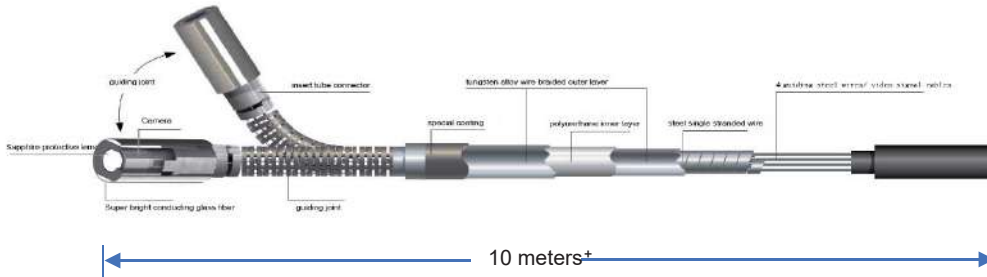


FLEXIBLE ARTICULATION CONTROL

360° joystick-control articulation, damping type positioning design, precise probe locking technology, make the detection more accurate and efficient. Independently developed technology of long-distance transmission ensures bending angle $\geq 100^\circ$, even the tube reaches 10 meters (only available on white LED light).



360° precision articulation



maximum bending angle $\geq 190^\circ$



STRONG HARDWARE

TU series HD UV fluorescent videoscope adopts modular design, the host and the tube can be separated with one button. The dual light source of the probe is designed in an integrated way, and an insert tube is equipped with both ultraviolet light and white light at the same time. By one-key switch through the universal button, white light can be used to find the direction, and ultraviolet fluorescence detection can be performed.

Monitor and tube can be separated by one button.



WIFI button



360° joystick control



damping control



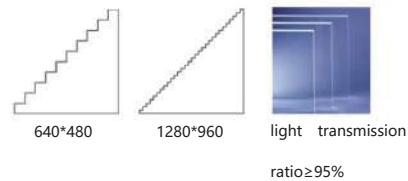
High temperature alarm function: Orange alarm when the temperature is above 65 °C; Red alarm and shutdown when the temperature is more than 80 °C.



The image can be outputted to HD display by HDMI.



Original dual battery design, 8 hours working time; real-time battery indication



Display resolution: 1280*960, high light, wide color gamut, all sight viewing angle, ensure clear image, rich colors and good color reproduction.

QUALITY ASSURANCE

All products are complied with RoHS, CE and ISO standard and passed testing for temperature · waterproof · drop · vibration and pressure. We devote ourselves to providing high-quality professional inspection instrument to every customer.



PARAMETERS

Tube System	Probe Diameter(mm)	Φ6
	Camera Pixels	1,000,000
	Image Resolution	1280×720
	Video Resolution	1280×720
	DOF	10-100mm
	FOV	120°
	Viewing Direction	front view
	Light Source	Rear-mounted optic fiber cold UV 365nm+White source (14000 Lx)
	Illuminance	1000uw/cm ²
	Tube Length	1.5m / 2m / (3m customized length)
	Protecting Device of Durability	42mm buffer protection device between tube and handle

	Articulation	360° joystick-control articulation
	Bending Angle	Maximun:190°
	Probe Positioning	Damping positioning & articulation lock device
	Wi-Fi Transmission	Image transmission to Mobile phone, computer by Wi-Fi(optional)
Monitor System	Display	5.1" color IPS display, all sight viewing angle, sunshade design
	Display Resolution	1280*960
	Zoom In/Out	8X
	Language	English / French / German / Spanish / Japanese / Traditional Chinese / Simplified Chinese / Russian / Korean
	White Balance Suppression	5 levels adjustable
	White Balance	Auto white balance, automatically adjusts and eliminates speckles to achieve optimal images.
	Image Effect	Negative film/ black & white/standard
	Temperature Indication	High temperature alarm (optional)
	IP Level	Probe/tube: IP67
	Software Function	Playback, image parameters adjust and rotate
	Structure	Hand-held integrated design
	Image/Video Format	JPEG/MOV
	Comparative Measurement	Use measuring probe and analog scale to compare and analyze the internal defect and size of the inspected object.
	Data Port	HDMI video output, Micro USB port with water & dust proof device
	Working Time	≥4h
	Battery Capacity	3.7V, 3200mAh×2
	Power Charge	DC5V, 1A
Weight	≤0.8Kg	
Compatibility	Interchangeable monitor and tube with different diameters	
Accessories	Standard Configuration	Instrument case:1pc; videoscope: 1 set; battery: 2pcs; card reader: 1pc; 32G. TF card: 1pc; charger: 1pc; USB cable: 1pc; user manual: 1 set

MODEL	DISPLAY	DIAMETER	LENGTH	ARTICULATION	RESOLUTION	LIGHT
CT5-60014UV	5.1"	Ø6.0	1.5	360°(4 Way)	1280*720(HD)	UV & LED Swicth
CT5-60024UV	5.1"	Ø6.0	2	360°(4 Way)	1280*720(HD)	UV & LED Swicth
CT5-60034UV	5.1"	Ø6.0	3	360°(4 Way)	1280*720(HD)	UV & LED Swicth

Due to product updates, the final parameters should be based on specific models.