



## Sebalog P-3

Pressure logger

### Benefits

- ▶ Ideal for pressure surge measurements
- ▶ Freely adaptable for all connection types
- ▶ Highly accurate pressure sensor
- ▶ Low height
- ▶ Large data memory
- ▶ Venting valve
- ▶ Wireless data transmission



### The logger: a brief description

The Sebalog P-3 is a pressure logger, especially developed for the requirements of drinking water suppliers. It is used for short-term measurements, in permanent installations for pressure monitoring, and for determining pressure surges.

Due to its small size, the Sebalog P-3 easily fits into all underground hydrants. Depending on the application, additional adapters (e.g. Storz or BS) can be easily attached to fasten the logger. This enables flexible use of the logger for all types of connections.

The pressure logger is additionally equipped with a venting valve to maximise measurement accuracy.

A unique feature of the pressure logger is the wireless data transfer, which allows the user to communicate with the logger even when the hydrant covers are closed or inaccessible.

The data can be read and analysed in real time, using a wireless display (Reader-3) or a radio receiver (LOG RI).

### Technical data – Sebalog P-3

Pressure level	0 ... 25 bar others on request
Dimensions	110 x 96 mm Ø
Weight	approx. 1 kg
IP protection class	IP 68
Operating temperature	-20 ... +60°C
Storage temperature	-20 ... +70°C
Power supply	Internal lithium battery
Operating time	>5 years or 10,000,000 measurements
Memory	>1,000,000 readings
Interface	Bi-directional wireless transmission
Maximum error of pressure sensor	1%
Sampling rate for Pressure surge measurements	0.1 s
Log interval	1 s ... 24 h



Sebalog P-3 with a hydrant key adapter

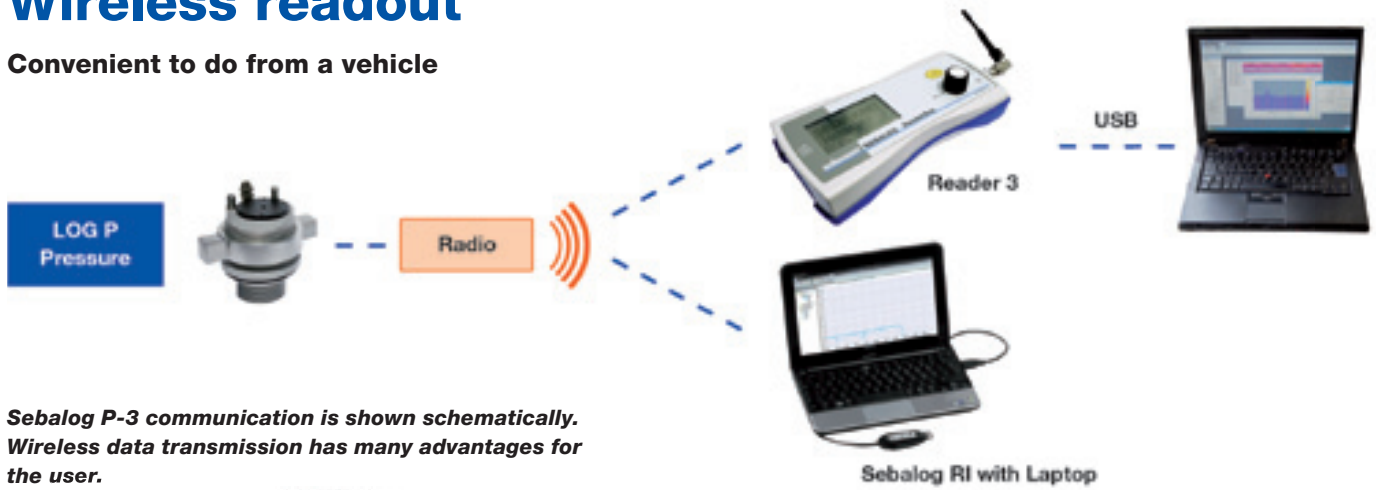


Sebalog P-3 in underground hydrants



## Wireless readout

Convenient to do from a vehicle



*Sebalog P-3 communication is shown schematically. Wireless data transmission has many advantages for the user.*



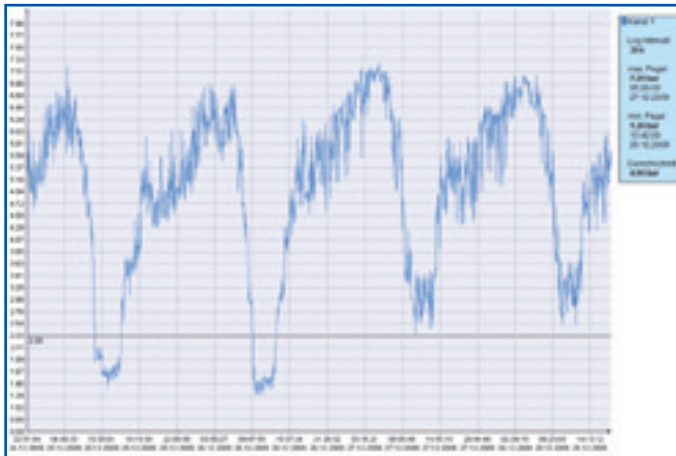
*A Sebalog P-3, fastened on an above-ground hydrant*



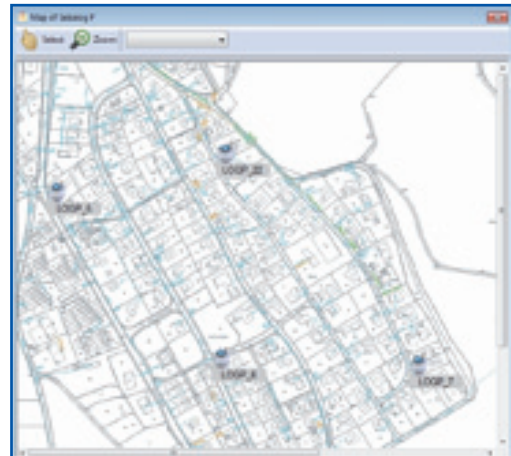
*The LOG RI is a radio interface for the PC, which is used to program and read out the pressure Sebalog P-3. It can also be used to perform a real-time measurement.*

## Easy to evaluate on a PC or laptop

Fast and professional



*Analysis of a pressure measurement over 4 days*



*The clearly represented display of logger positions, with GPS accuracy if needed, simplifies analysis of the data.*